



Page 4 - Surrey graduate meets Michelle Obama



Page 7 - Could your car park itself?



Page 10 - Iain Sinclair, Writer-in-Residence



Page 11 - Shrek workshop supports local group



Right: an artist's impression of the garden design
Main image: the garden will feature irises, flowers celebrated for their wellbeing properties. Credit: Getty Images

Anti-stress garden coming to RHS Chelsea Flower Show

The University has partnered with Silent Pool Gin to present an anti-stress garden at the RHS Chelsea Flower Show, transporting visitors to the Surrey Hills using scents and sounds.

The exciting collaboration with Albury-based gin brand Silent Pool, acclaimed Surrey-based garden designer David Neale and Dutch horticultural pioneers Plant-e will explore plant technologies that encourage wellbeing.

Through their combined expertise, the team will create a sustainable oasis of calm for visitors to enjoy, with a plant-controlled soundscape created by two professors from the University.

Professor Tony Myatt, Head of the Department of Music and Media, has designed a natural, three-dimensional soundscape featuring audio recordings from the Surrey Hills. The orchestration of the soundscape will be carried out by the garden itself, through the power of plants.

Professor Myatt said: "By creating a soundscape orchestrated by the plants, the garden will reveal more about what's going on inside plants and how we can work with, rely on and benefit from them."

Director of the Centre for Environment and Sustainability Professor Richard Murphy specialises in plant science and sustainability.

He will be using sensors to detect and capture changing electrical signals directly from the plants, enabling the garden to govern and interact with the soundscape.

Professor Murphy said: "This truly exciting collaboration brings to life the hidden power of plants, their value for sustainability and the innovative ways we can experience the natural world."

These natural sounds, which help the body relax, will be combined with flowers that are celebrated for their wellbeing properties, including roses and irises.

After the Flower Show, the garden will be donated to Guildford-based respite charity, Cherry Trees.

Ian McCulloch, Co-Founder of Silent Pool Gin, said: "We're thrilled to be working alongside the University and award-winning garden designer David Neale for this partnership. Through emulating sounds inspired by the beautiful Surrey Hills, it will be a celebration of the local heritage of both the Silent Pool Gin distillery and the University."

Guildford Residents' Survey 2019

The University is calling on residents of Guildford to take part in our fifth annual residents' survey.

Since its launch in 2015, the Guildford Residents' Survey has provided the University with valuable insight, feedback and ideas to build greater links with our home town.

Last year, more than 1,300 local residents took part, with many entering the annual prize draw to win one of five £100 cash prizes.

We want to hear from you – to complete the survey visit: surrey.ac.uk/guildfordsurvey

The survey closes on 1 July 2019.



Guildford High Street



Welcome from our guest editor Peter Gordon, local broadcaster, media adviser and actor

I was delighted to be invited to be guest editor for this edition of *Your University*. I know you'll find it a truly interesting read. As a Guildfordian born and bred, and having worked in the area's media for nearly 30 years, I have a huge respect for the University of Surrey. In recent years particularly, the growth and opportunities which avail themselves at the University have seemed to be almost limitless.

Within the spirit of collaboration and under the progressive and passionate leadership of Professor Max Lu, the University continues to go from strength to strength. I have witnessed this first-hand through the joint projects we have completed at Eagle Radio, as well as being lucky enough to have received a Guildford Roll of Honour award – a joint scheme between the University and Guildford Borough Council.

Among the pages to follow, I would draw your attention to the details of the Guildford Residents' Survey – the fifth of its kind and a vital way for the University to receive important feedback from those in the community who have suggestions and thoughts.

On page 4, the review of the recent Innovate Guildford festival is a great example of how the University gets involved with local events, enabling students and academics to take part in an occasion which is fast becoming a must-do in the town's calendar.

I would also recommend that you study the recent social impact report (page 6). It's easy to simply see the University as a group of buildings and people at the top of Stag Hill, but it's so much more! The report gives the facts, figures and evidence to support this – from charity giving to local volunteering.

On page 10, there's an interview with the University's Distinguished Writer-in-Residence, Iain Sinclair, who has an interesting take on how to interact with budding writers which is well worth a read.

The University's work in cosmic dealings is well known – but what it's now doing in terms of making all things space relevant to our daily lives is of particular interest, as we head onwards in this ever-changing twenty first century. For example, on page 12 you can find out more about the SPRINT scheme which aims to help small businesses better understand space technologies and what this means for our future.

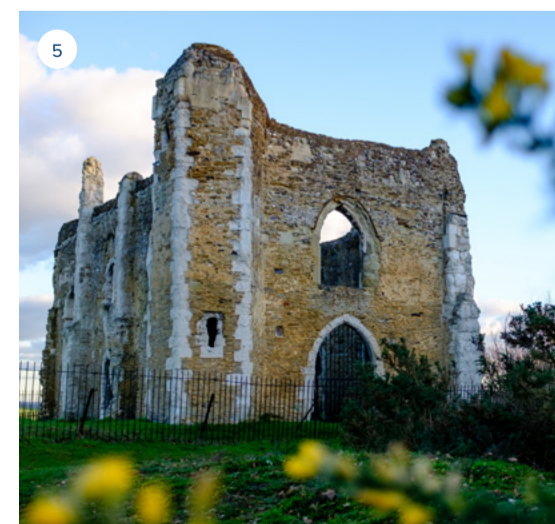
Finally, I would also encourage you to read about the various collaborations between the University and local schools and colleges (page 11). From *Shrek* singing workshops to science research placements for local sixth form students, these projects help to bring the next generation into the University environment.

I do hope you enjoy reading *Your University* and find it informative as well as a reminder of the wonderful things that happen right here on our doorstep.

Instagram: Spring has sprung

To celebrate the beauty of Guildford in spring, we asked our Instagram followers to share their best seasonal snaps – here's a selection of our favourites, taken by students, staff and local residents.

Follow [@uniofsurrey](#) on Instagram to see more.



1. @raincat_photography
2. @surreycwb
3. @marmelx
4. @ms_emilog
5. @rgbcraft

Support for sustainable travel

The University of Surrey is supporting Guildford Borough Council and Surrey County Council's new and improved Sustainable Movement Corridor (SMC).

The SMC aims to encourage people to walk, cycle or take the bus by providing a safe, attractive and high-quality route across Guildford.

In support of the SMC, University researchers and students have investigated ways to improve the pedestrian and cycle path routes between the town centre and western neighbourhoods of Guildford – routes that have often presented challenges due to perceived road safety issues, litter and air pollution.

To help tackle this, Professor Prashant Kumar and his Global Centre for Clean Air Research have been providing advice on pollution mitigation measures and sustainability improvements, which will be used to further enhance the experience of pedestrians and cyclists on the route.

The University's Students' Union has also contributed to the scheme by designing a mural that will be installed in one of the two underpasses near the campus, making pedestrian access more attractive.



A greener Guildford

The University is leading a locally-focused research project, collaborating with stakeholders in the north-west Guildford area.

In partnership with Surrey Wildlife Trust and Guildford Borough Council's Project Aspire, the ambition of the NW Guildford 2030 project is to help support the residents of north-west Guildford in their desire to spark positive change in their community. Drawing on participation from the local community, alongside analysis of social networks, the project seeks to establish a greener future for the area.

A series of workshops have already been held with the local community to understand how investing in 'natural capital' (the world's natural assets and green spaces) can lead to sustainable enhancements to quality

of life, as well as understanding more about the community's aspirations.

There are several other local research projects taking place in tandem, all designed to enhance the community and help better understand and solve practical problems faced by those living in the area, such as parking, sustainability and social cohesion.

To find out more about NW Guildford 2030, visit: [nwguildford2030.wordpress.com](#)

To find out more about Project Aspire, visit: [guildford.gov.uk/projectaspire](#)



Left to right: Sir Martin Sweeting OBE, Dame Jocelyn Bell Burnell DBE and Distinguished Professor Alf Adams
Credit: David Hatful

A stellar performance: prestigious Adams Sweeting lecture series celebrates women in astronomy

The University welcomed world-renowned astrophysicist Dame Jocelyn Bell Burnell DBE to present the first event of the 2019 Adams Sweeting lecture series, hosted by Surrey academic, Professor Jim Al-Khalili.

Adams Sweeting is the University of Surrey's flagship lecture series, created in honour of two of the University's most prestigious academics; Distinguished Professor Alf Adams – who invented the strained quantum well laser used in devices such as DVD players and barcode scanners – and Distinguished Professor of Space Engineering, Sir Martin Sweeting OBE, a pioneer of modern small satellites and the Founder and Executive Chairman of Surrey Satellite Technology Ltd.

The events offer the local community the chance to hear about the pioneering developments and innovations that are shaping our world.

On 27 March, more than 250 guests joined us to hear Dame Jocelyn Bell

Burnell give her lecture, which shed light on the challenges of today's perception of female scientists, while celebrating the careers of some well-known female astronomers.

Dame Jocelyn has been credited with 'one of the most significant achievements of the twentieth century' for her co-discovery of the first radio pulsars in 1967, and has since become a role model for young students and female scientists throughout the world.

The next lecture in the series will welcome geneticist Sir Paul Nurse, Nobel Prize winner and Chief Executive of the Francis Crick Institute, on 16 October.

To find out more and register for a ticket, visit: [surrey.ac.uk/asevents](#)

Seeing the funny side of research

After a successful 2018, Bright Club Guildford kicked off the year with a sold out performance at Guildford's Boileroom on Wednesday 6 March.

Bright Club is a national platform where, for one night only, university academics and researchers put down their microscopes, pick up a microphone and find the funny side of their research. Each performer takes to the stage to tell the audience a little about what they do through the medium of stand-up comedy.

Guildford's Bright Club performs at least three times a year and, in the first event of 2019, 80 guests enjoyed many laughs as researchers from the University of Surrey performed comic routines on topics ranging from quantum biology and psychology, through to aerospace engineering.

Bright Club will return later in the year at Guildford's Fringe Festival on 19 July, followed by an autumn performance at the Boileroom. For more information about Bright Club, find them on Facebook or follow [@BrightClubGLD](#) on Twitter.





Left: Surrey graduate Winnie Mac
Above: Winnie Mac greets Michelle Obama on stage
Credit: Will Fahy

Surrey graduate takes centre stage with Michelle Obama

Meeting Michelle Obama in 2009 was the catalyst that schoolgirl Winnie Mac needed to motivate her for success. The former First Lady visited Winnie's Islington school with the message "Being smart is the coolest thing in the world."

The message stayed with Winnie and a decade on she was invited to join Mrs Obama on stage for an emotional return visit. Since their first meeting, Winnie has achieved good exam results, volunteered as a maths tutor at her school, gained a BSc in Chemistry from the University of Surrey and secured work as a scientist.

Winnie said: "I was so excited to join her on stage but at the same time I was also very nervous in case

I messed up my words, especially with the large audience of students and reporters. Once it started, I felt immediately comforted; she answered all of our questions engagingly and spoke of things that a lot of us can relate to – relationships, finding our passions and imposter syndrome to name a few."

Mrs Obama said of reuniting with Winnie and other former pupils: "Meeting the girls reminded me how much courage and talent and hope there is."

The stranger on the bridge

To mark University Mental Health Day 2019, the University hosted an in-conversation event with Jonny Benjamin and Neil Laybourn, who talked about their story, mental health and the journey to hope and recovery.

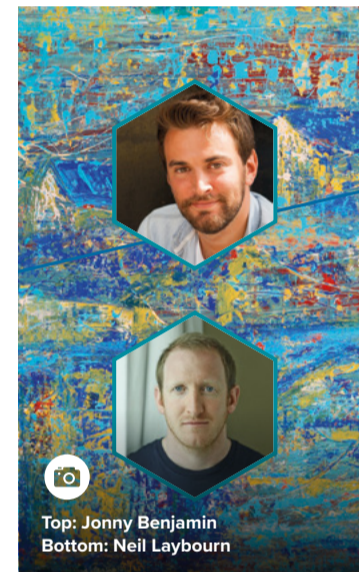
In 2008, Jonny stood on Waterloo Bridge, about to jump. A stranger saw his distress and stopped to talk to him – a decision that saved Jonny's life. Six years later, together with Rethink Mental Illness, Jonny launched the #findmike campaign to find the stranger who helped him, and the pair were reunited after the campaign went viral.

300 guests, including local residents, staff, students and alumni, listened to the pair discuss how far we have come in rethinking our attitudes towards mental illness while highlighting how much more needs to be done to create true parity between mental and physical health provision in the UK.

Since reuniting, Jonny and Neil have become leading advocates in helping end mental health stigma. In 2017, Jonny was awarded an MBE

in recognition of launching the ThinkWell workshop for schools and has recently published his memoir, *The Stranger on the Bridge*.

Laura Smythson, Deputy Director of Wellbeing at the University, said: "This inspiring story shows how one person can make a difference and save a life. Our mission is to reduce the stigma of mental health and suicide, encouraging people to talk openly and seek support early."



Top: Jonny Benjamin
Bottom: Neil Laybourn

'Learning Together' with local prisoners

Studying criminology at university rarely brings students into contact with the subjects of their analysis – the prisoners themselves. But that's all about to change with a new scheme.

Established at the University of Cambridge, the 'Learning Together' project brings the criminal justice and higher education sectors together for the purpose of shared learning. As part of this, the University of Surrey has launched a new module called 'Opening Criminology', where students spend eight weeks studying alongside prisoners from HMP Send, a closed training prison for women. Together, they'll explore a range of introductory criminology topics, including the psychology of crime, issues with state crimes and environment and constructions of crime.

Across the country, 'Learning Together' has already demonstrated positive outcomes, including improved prisoner self-confidence and communication skills. And it works both ways, with participants challenging their own assumptions as they discuss ideas as peers.

Carlene Dixon, Governor at HMP Send, said: "This is an exciting partnership that will give women at Send the chance to work towards their full potential, while also breaking down barriers and challenging perceptions – a huge step in building hope for a better future."

Innovate Guildford festival explores the future of living

This year's Innovate Guildford festival, run by Guildford Borough Council, saw thousands of people inspired by innovation in science and the arts.

The University was proud to be part of the 2019 festival, which was hosted at G Live and celebrated the theme of 'future living'. Now in its fourth year, the annual event showcases advanced technologies and offers family-friendly insight into projects from across the region.

Nikki Dormon, Public Engagement Manager at the University, said: "Innovate Guildford provides the perfect opportunity to come together with local pioneers to celebrate Guildford as a true hub of innovation. It also enables us to share some of the groundbreaking work the University is doing, and hopefully inspire young innovators of the future."

Academics and students from across the University took part in the event, presenting hands-on and engaging demonstrations for visitors. Exhibitions included discovering the hidden salt in everyday foods, unearthing the science behind nanotechnologies and exploring what robots and artificial intelligence can do in space.

Team SURTES, the University's Formula Student team, were also in attendance, displaying their car from last season. Formula Student,

which forms part of a project on the University's engineering courses, sees teams from across the globe design, build, market and race single seat racing cars. Team SURTES first entered in 2008 and, in 2016, moved to an electric model – making them one of the first UK teams to compete with an electric car, illustrating the importance of electric vehicle development within Innovate's 'future living' theme.

Chris Burchell, Local Economy Manager at Guildford Borough Council, said: "Innovate Guildford is a fantastic way to show young people the opportunities open to them right here in Guildford. The University's contribution to the event reflects the depth and diversity of talent that emerges from this world-class facility and their exhibits were a great attraction for our thousands of visitors."



Visitors talk to a University of Surrey Physics student at the Innovate Guildford festival 2019. Credit: Grant Pritchard

More pedal power

Following the University's successful launch of a 50-strong bike-share scheme in Guildford last year, Surrey has secured further funding to expand, improve and safeguard the project. So far, more than 1,200 University staff, students and Research Park tenants have registered to use the scheme, with approximately 600 cycle journeys made each week across the network.

Together with partners Santander, Huawei and NextBike, as well as local businesses and Guildford Borough Council, the University scheme will benefit from planned improvements to local road networks over the next few years.

University of Surrey Transport Manager Ed Nelson said: "The University continues to invest in improvements to the cycle infrastructure on campus that will further support our NextBike users. Over the next six months, a widened cycle path between Stag Hill and Manor Park as part of the Sustainable Movement Corridor project will make inter-site travel quicker and easier than ever.

"Exciting plans are also developing to expand the scheme to the Guildford Business Park and into Guildford town centre. We are committed to putting this scheme at the very heart of our green travel arrangements for years to come."



Runners gather at the University to warm up before the start of the race

Limbering up for local charities

In February, more than 500 runners participated in the first Kelly's Guildford 10k, organised in partnership with the University of Surrey Students' Union.

Students' Union Vice President Activity Alexa Hughes said: "One of our aims is to bridge the gap between the University and our town. I'm passionate about having an active campus and we're thrilled to have raised over £19,000. This would not have been possible without our partnership with Kelly's Storage, which covered all of the event costs, meaning all the money raised will go to our two chosen local charities; Oakleaf and Shooting Star Chase."

For more information, and to sign-up for Kelly's Guildford 10k 2020, visit: charity.kellystorage.co.uk

Beating period poverty: staff support The Red Box Project

Staff from the University's Faculty of Health and Medical Sciences have joined forces to support The Red Box Project, a not-for-profit scheme which seeks to help young people in our community by providing local schools with red boxes filled with free sanitary products.

Founded in March 2017, The Red Box Project was launched by three friends who were angered by reports of 'period poverty' in the news and the idea that young women were missing out on their education because they couldn't afford sanitary products. Since initially providing a stocked box of menstrual products

to a secondary school in Portsmouth, the scheme has seen attendance levels at the school increase by nearly a third. There are now 2,700 red boxes nationwide.

Heidi Kitson, co-ordinator of the project at the University, said: "We love that this project makes a real difference in our local community. We currently support six local Guildford schools and hope to be able to support more throughout the year."

You can donate to The Red Box Project Guildford by visiting the Bravissimo store in the town centre, or follow the project on Facebook for other ways to donate.



Have you been surprised by Surrey?

You might have noticed the hashtag **#SurprisingSurrey** appearing across social media, as the University showcases how the work we do can benefit our local community.

Have you ever wondered how hedges can help you breathe, or how technology could beat diabetes? How much science you can get in a pint, or how coffee waste could supercharge the world?

We want to share some surprising examples of how the University's research on campus, as well as the hands-on work we do in the community, helps to address some of the biggest challenges facing society today.

Lisa Dimbylow, Public Engagement Manager at the University, said:

OBE for former University council chair

Dr Jim Glover has been awarded an OBE for voluntary service in the Queen's New Year's Honours List.

Jim served as Chair of University Council for almost seven years and, most recently, has achieved great success as High Sheriff of Surrey, tackling rising permanent exclusions in Surrey schools and encouraging student volunteering across higher and further education institutions.

Jim has continued to connect Surrey students with practical, local work experience, enhancing their education and employability. One such project has brought together Guildford's judiciary, civic leaders, the University of Law and the University of Surrey's School Of Law to create a strong network linking education, outreach and justice.

Vice-Chancellor Professor Max Lu said: "I can think of few people as deserving of this recognition.

"Jim's commitment to improving lives across Surrey – from our University community to the county as a whole – stands as a great and lasting example of philanthropy and compassion."

Prepare to be surprised and visit our website for more stories at: surrey.ac.uk/in-the-community

Measuring up the University's social impact

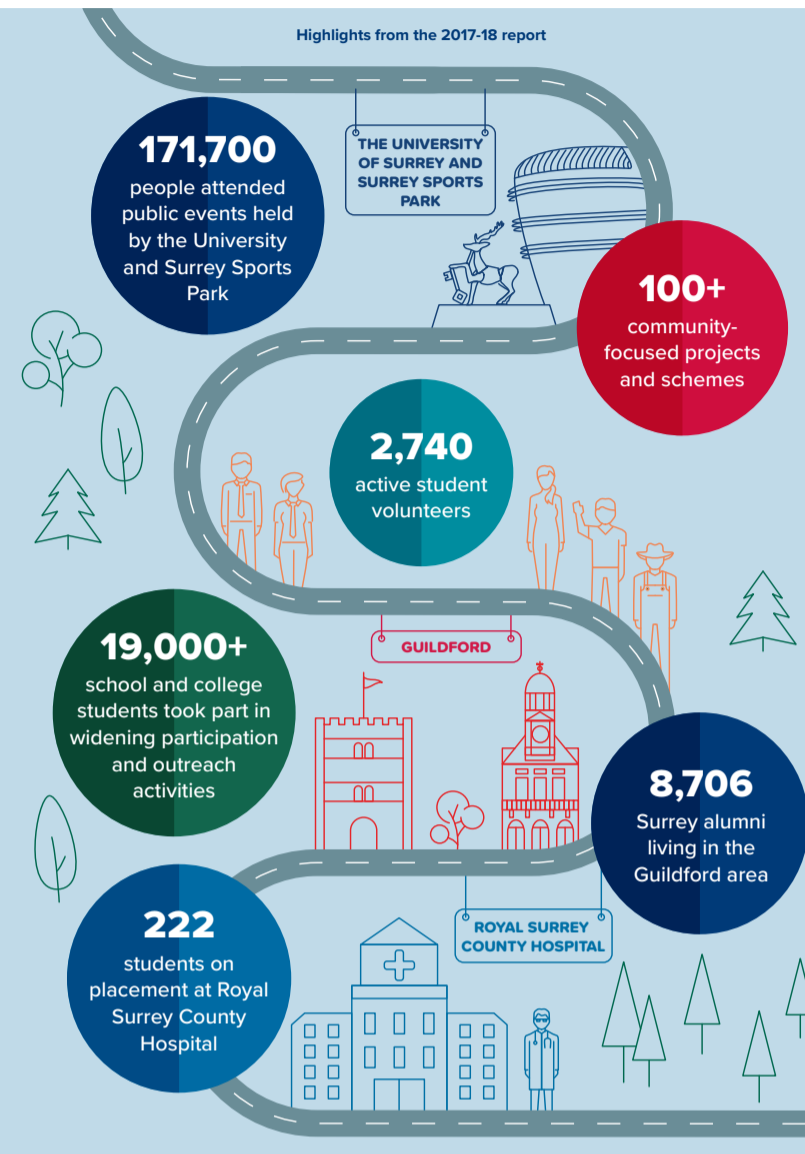
The University has published its latest social impact report, *Measuring Up 2017-18*. With updates on the significant activities and achievements of the University community over the year, the report celebrates Surrey's close relationships with the local town, global partners, alumni and friends in its aim of giving back to society.

This includes Surrey's world-leading research, supporting regional growth and innovation, as well as local community-focused schemes such as the community garden for Westborough, and the work of the Widening Participation and Outreach

team with Kings College, Guildford. The report also addresses important local issues such as student housing and transport and sustainability, and identifies how the University is working with Guildford residents and organisations in these areas.

The University will continue to evaluate its impact in order to better understand how it can improve its contribution to the local area and wider community.

To read the full report, visit: surrey.ac.uk/socialimpact2018



Surrey needs you!

Want to make a difference to your community, improve the local environment, or even help solve some of the world's biggest challenges?

The University of Surrey has many opportunities for local residents to get involved with current research, from joining our pioneering academics out in the field, to supporting the future of animal health and welfare.

Surrey Clinical Research Centre

Take part in a study on sleep or the immune system at our world-renowned centre for sleep, vaccine research and patient studies.

Visit: helpresearch.co.uk for more information.

School of Veterinary Medicine

Through our pet donation scheme, your best friend can continue to have a positive impact on the world, providing a vital resource for veterinary education and research.

Contact: vetschool@surrey.ac.uk or publicengagement@surrey.ac.uk for more information.

NW Guildford 2030

Residents in Park Barn and Westborough can check out the NW Guildford 2030 hub to stay up to date with upcoming green projects in north-west Guildford.

Visit: nwguildford2030.wordpress.com for details.

ISCAPE Project

Help reduce the impact of air pollution through community-centred research activities. Turn to page 8 to read about the recent clean air project local residents participated in.

Visit: livinglabs.iscapeproject.eu/Guildford for more information.

For details about how you can get involved with the University's research, contact our Public Engagement team: publicengagement@surrey.ac.uk



Left: Guildford in Bloom 2018 student garden
Above: Stuart Riddle, Recycling and Waste Project Officer, Guildford Borough Council

You said, we did

Following our Guildford Residents' Survey 2018, we wanted to share how we're addressing some of your concerns about how students affect their local environment.

Through working closely with Stuart Riddle, Recycling and Waste Project Officer at Guildford Borough Council, alongside local resident groups, we've been able to further educate students on one of the biggest concerns raised by local residents – how to manage their waste properly. This work has resulted in labelling bins with official council warnings and property numbers, ensuring

students have the correct number of bins for their properties and removing litter from the streets. We have also provided students with an online guide called *Know Your Bins!*

Planning is also underway for our new garden entry for Guildford in Bloom 2019, and we will launch a student competition for best before and after garden images, encouraging students to take care of their home environment.

GUILDFORD RESIDENTS' SURVEY 2019

Take part in this year's survey before it closes at 5:00pm on 1 July 2019.

Visit: surrey.ac.uk/guildfordsurvey



A digital boost for our local economy

The University of Surrey's Centre for Research and Enterprise, Visit Surrey and Surrey Chambers of Commerce are joining forces to support local businesses.

Tourism is a big business in Surrey, with 30 million day-visitors bringing in £2 billion a year. In a bid to boost the local economy, a new partnership between the University, Visit Surrey and Surrey Chambers of Commerce will introduce a series of events aimed at helping local businesses enhance their profitability through digital collaboration.

This partnership follows the success of Collaboration in Surrey – The Key to Digital Success, an event held in November.

The event brought the three organisations together with local businesses to stimulate conversations about embracing the digital economy, with attendees including members of the local community, marketing and PR managers and directors of visitor attractions.

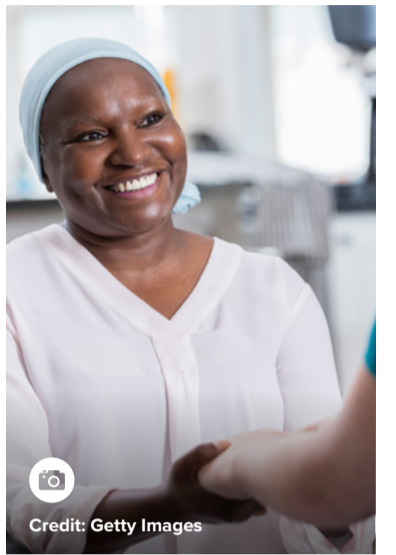
Local businesses will be able to find out more about the follow-up events as details are released.

AI improving lives

Doctors could get a head start in treating cancer thanks to new artificial intelligence developed at the University of Surrey's Centre for Vision, Speech and Signal Processing (CVSSP).

Researchers have created two machine-learning models that are able to accurately predict the severity of three common symptoms faced by cancer patients – depression, anxiety and sleep disturbance. All three symptoms are associated with a significant reduction in cancer patients' quality of life.

The project, which is a collaboration between the University of Surrey and the University of California, uses algorithms to predict when, and if, symptoms surface. This information can then help clinicians identify high-risk patients and pre-emptively develop a plan to manage the symptoms, with a view to improving their quality of life.



To date, the results of the project have found that the actual reported symptoms were very close to those predicted by the machine learning methods.

CVSSP celebrates its 30th anniversary this year. Over the decades, the Centre's research has pioneered a range of new technologies for the benefit of society and the economy, from healthcare applications to improved security.

Parking AI-style

Fed up with parking nightmares? Thanks to new technology being developed at the University of Surrey, cars could soon be able to drive themselves to a multi-storey carpark, find a space and return to their owners at the push of a button.

Innovate UK has awarded a multimillion pound grant to the Autonomous Valet Parking project led by Surrey's Centre for Vision, Speech and Signal Processing, with a target to produce a live demonstration in May 2020. The University is working in partnership with Parkopedia, Transport Systems Catapult and Guildford Borough Council to pilot the technology in Guildford, and has already collected preliminary data from Farnham Road carpark.

Autonomous valet parking could be one of the first fully autonomous features available to the general public and the project will look at how vehicles can park themselves safely with the help of parking maps.

This project is part of a range of research into autonomous vehicles at the University. Richard Bowden, Professor of Computer Vision and Machine Learning, is building a fully autonomous car based on a Renault Twizy and is sharing the research on 'How to build an autonomous car' through his blog.

For more information visit: autonomous.home.blog/



NHS funding to transform local diabetes care

An ongoing collaboration between the University of Surrey, North East Hampshire and Farnham Clinical Commissioning Group, SilverCloud Health Ltd and OurPath Ltd has been awarded £545,000 by NHS England.

The money will go towards improving diabetes care in the UK through BEAT Diabetes, a programme that will use online digital platforms to encourage and support people with type 2 diabetes to make positive lifestyle changes.

This innovative partnership is one of seven successful projects across the UK to share a portion of £7 million from NHS England, helping to tackle some of the country's biggest challenges in health and social care.

Blue light for lower blood pressure

A new study from the University of Surrey and Heinrich Heine University Düsseldorf, in collaboration with Philips, has found that exposure to blue light can decrease blood pressure, potentially reducing our risk of developing cardiovascular disease.

During this randomised study, participants were exposed to 30 minutes of whole-body visible blue light at approximately 450 nanometres (a dose comparable to daily sunlight). This was then followed by exposure to a control light on a different day. To assess the impact, participants' blood pressure, stiffness of arteries, blood vessel dilation and blood plasma levels of nitric oxide stores were measured before, during and up to two hours after being exposed to both lights.

Researchers discovered that while the control light had no effect, the blue light significantly reduced the systolic blood pressure of participants, producing a similar result to that seen in clinical trials with blood pressure lowering drugs – potentially leading to new drug-free methods of blood pressure control.



Cleaning up the cosmos: harpoon successfully captures space debris

In a keenly-anticipated experiment, the University of Surrey's RemoveDEBRIS satellite has proved it can make space a safer place.

The third successful test in orbit for the RemoveDEBRIS project's harpoon-capture system took place on 8 February 2019.

Some 7,000 tonnes of 'junk' travel around our planet at thousands of miles per hour – from used rockets to dead satellites and everything in between. This threatens catastrophe for vital GPS satellites and space stations; even a fleck of paint can cause damage if it collides at high speed.

University of Surrey scientists and engineers are leading the operation to test debris-removal technology.

RemoveDEBRIS previously used its on-board net to successfully capture a simulated piece of debris, and then trialled its state-of-the-art vision navigation system to identify 'space junk'. This third test has proved the harpoon's capability to pierce a target.

The fourth and final experiment will take place this spring, making the RemoveDEBRIS mission one of the first demonstrations of active debris-removal technology in human history.

The spacecraft is operated in orbit by engineers at Surrey Satellite Technology Ltd in Guildford.

Life-changing research funded by Surrey graduate

The Equal Opportunities Foundation, established by Surrey graduate and philanthropist Marcus Lee, has pledged £1.5 million to the University of Surrey to support pioneering research in vaccinology and renewable energy.

The generous gift will go towards investigating how new vaccines might combat infections increasingly resistant to antibiotics, such as tuberculosis and malaria. It will also fund research into a new generation of solar cells that can easily be incorporated in structures and rooftops, ultimately enabling buildings to be their own source of energy.

The gift will also set up the Surrey-China Fellowship

Programme, enabling Surrey and Chinese students and researchers to benefit from studying or working in both countries. It will support scholarships, professional training bursaries and research collaborations.

Marcus Lee, who graduated from Surrey with a BSc in Engineering in 1992, said: "The innovative and pioneering work going on at Surrey makes the University an ideal partner for us to support."

Seeing green: residents join forces with the University to tackle pollution in Guildford

The University's Global Centre for Clean Air Research (GCARE) has been running interactive community workshops with local residents.

Organised through the iSCAPE project, the workshops saw participants given Smart Citizen kits, which enabled them to perform pollution-related experiments within their communities. The workshops allowed residents to identify problem areas near schools, playgrounds, hospitals and beside busy roads, where the use of green infrastructure such as hedges could improve the air quality. The citizen science also helped GCARE add further value to its world-class pollution research.

The iSCAPE project is part of the Guildford Living Lab scheme, which is a platform for raising citizens' awareness of air pollution issues and the use of green infrastructure to improve health and wellbeing.

Professor Prashant Kumar, Director of GCARE, said: "What has been very apparent and heartening from the iSCAPE events is how well informed and passionate Guildford residents are about cleaner air. It is clear that residents love their community, and we were floored by the number of innovative and workable ideas that resulted from the workshops."

Professor Kumar is also advising Guildford Borough Council on clean air issues in the wider Guildford area.



Green infrastructure such as hedges could improve air quality. Credit: Getty Images

Event explores new ways to fight cancer

The University of Surrey, Surrey Cancer Research Institute (SCRI) and charity Topic of Cancer have co-hosted an event to inform the public about the latest revolutionary treatment for cancer.

Held at the Harbour Hotel in Guildford, the event welcomed more than 100 guests to hear how immunotherapy is now routinely used to treat several cancers. Speakers included oncology consultants from the Royal Surrey County Hospital specialising in melanoma, lung and kidney cancer, as well as patients.

Professor Hardev Pandha, head of the University's Targeted Cancer Therapy research group and founder of SCRI, organised the event. He said: "Immunotherapy is now a credible alternative to

conventional cancer treatments with the potential to cure patients.

"However, much more research is needed to make immunotherapy even more effective in a wider range of cancers and reduce the number of side effects which can result from treatment. Topic of Cancer has been instrumental in raising funds for my group to carry out this essential work and to raise the profile of immunotherapy in the community."

For more information visit: topicofcancer.org.uk



Left to right: Dr Madeleine Hewish, The Royal Surrey County Hospital; Kim Ronaldson, Topic of Cancer Charity Trustee; Professor Hardev Pandha, University of Surrey; patient representative Chris Caswell; Dr Nicola Anells, University of Surrey and Dr Agnieszka Michael, The Royal Surrey County Hospital

Sign of the times

The world's first machine capable of translating British Sign Language (BSL) into written English is set to be built by the Centre for Vision, Speech and Signal Processing (CVSSP) at the University of Surrey.

BSL is a language in its own right, with its own grammar, and is very different from English. The language uses several parts of the body simultaneously to fully express a range of phrases, ideas and emotions.

The team at CVSSP – who are passionate about sign language and have all learned to sign – are to develop a new system that will recognise not only hand motion and shape, but also the facial expression and body posture of the signer. This unique machine will then work out how these aspects can be put together into phrases and how these phrases can then be translated into written and spoken language.

It's an important landmark for deaf-hearing communications helping the deaf community to fully participate in the digital revolution.



Credit: Getty Images



2018 Newton Prize winner Dr Claudio Avignone-Rossa

Newton prize for electrifying coffee waste research

A Surrey academic has been awarded the prestigious 2018 Newton Prize for ground-breaking research into coffee waste.

The award, which recognises pioneering research projects supporting economic development and social welfare in developing countries, will see Dr Claudio Avignone-Rossa and Dr Lina Agudelo, his collaborator at the University of Antioquia in Colombia, receive up to £200,000 of funding to continue their work.

The team's research found that natural microbial communities can digest the highly polluting organic matter contained in coffee waste. If untreated and released to the environment,

the waste contaminates water streams and soil. But through the action of microorganisms, the degradation of those highly polluting compounds can be converted into electricity.

Dr Claudio Avignone-Rossa said: "Coffee is enjoyed by millions of people across the world, many of whom are not aware of the damaging environmental impact it can have. What we have found can help limit the impact coffee waste has on the environment and turn it into something useful which can help transform the lives of farmers."

Funding boost for dengue battle

Researchers from the University of Surrey have been awarded £750,000 from the prestigious Biotechnology and Biological Sciences Research Council to shed further light on the deadly dengue virus.

Working in collaboration with academics from the University of Cambridge, Surrey researchers will investigate how the mosquito-borne dengue virus instigates increased protein production in cells. Previous work from this acclaimed team discovered that the dengue virus infects cells, altering their function,

and so forces them to produce high quantities of viral proteins which are responsible for transmitting the virus throughout the body.

This new research could lead to the development of new techniques to stop the potentially lethal virus in its tracks.

In addition, understanding the mechanisms of protein synthesis – a contributing factor in many diseases such as cancers and neurodegeneration – could transform how we treat these conditions.

Celebrating innovation in the arts

The Faculty of Arts and Social Sciences (FASS) hosted their third annual Festival of Research, exploring the impact research can have on societal challenges.

More than 200 staff, students and visitors from business, public bodies and the local community attended to hear an exciting mix of discussion panels and presentations, highlighting the innovative and interdisciplinary research produced within the faculty.

The festival highlighted a range of innovative research methodologies – from digital technologies to qualitative approaches such as 'walking interviews' in outdoor environments.

Guests also heard from expert panel discussions, showcasing current faculty research into aspects of wellbeing and

ill-health and the societal impact of developments in digital technology, both generating interesting discussions and questions.

The festival provided the perfect opportunity for guests and researchers to network with colleagues across different disciplines, igniting ideas for future collaborations.



Postgraduate research student Gemma Connell presents at the FASS Festival of Research. Credit: Paul Stead

Helping autism through the arts

A new research project has been awarded £800,000 to investigate the impact that drama and participatory arts can have on girls with autism.

Conducted by researchers from the Universities of Surrey and Kent, this pioneering project will examine whether taking part in participatory arts workshops can help improve the self-perception, mental wellbeing and self-esteem of adolescent autistic girls. The workshops will use novel methods such as film, puppetry and performance.

Previous research in this area has suggested that autistic women are more likely to experience feelings of invisibility, mask their identities

and 'fake it' in order to fit in. This often affects self-confidence and self-worth, leading to increased rates of mental health issues among this group.

Dr Emma Williams from Surrey's School of Psychology said: "There is a particular need to support self-development and wellbeing in adolescent autistic girls, as adolescence is a crucial period for making sense of who we are... Findings from our research could help inform the support offered to girls with autism. The creative tools developed for use in the workshops could be embedded in the school curriculum."

Meet the team

Distinguished Writer-in-Residence: meet Iain Sinclair

The University of Surrey recently appointed internationally renowned writer and film-maker Iain Sinclair as its new Distinguished Writer-in-Residence. We sat down with Iain to find out a bit more about his role and how his experiences could inspire the next generation of writers – and vice versa.



Iain Sinclair. Credit: Joy Gordon

"I've been a practising writer for a long time, indeed most of my life – published, and unpublished and not even dreaming of publication (any other titles or add-ons feel arbitrary and undeserved.) So in becoming Surrey's Distinguished Writer-in-Residence, I was happy to accept the challenge of engaging with students, at various stages of their own careers, as they try to understand what being a writer might actually involve.

When it comes down to it, being a writer is not about learning to write in the same way as established authorities. It's about hunger, determination, self-criticism and the love of risk. The only right way, in the end, is your way: finding your own voice. To locate it and trust it. And give it free play without expectation of immediate applause or reward. Creative writing is as much about creative reading. Creative thinking. Knowing when you can keep quiet with a blank page.

What I have enjoyed in my role at Surrey is switching parts, coming away from the safety of my desk (where nobody offers contradiction) and having to stand outside, responding to work in so many different genres and registers. Science fiction, travel documentation, poetry, surreal short story, graphic novel or epic novel: they are all out there, even in the fragments we have time to examine in my creative writing sessions with students. And so, I learn so much every week.

I come to appreciate that my own experiences – as author, editor, publisher, broadcaster, film-maker – are useful only as a proof that there are many roads to finding your written voice.

My main career achievement so far has been finding my ability to persist, to keep going, making the numerous adjustments required by changing fashions and decades – not getting trapped in a single mode or set of conventions. For this reason, in my tutorials, I have tried to suggest tasks that require the students to attempt approaches outside their comfort zones, their usual styles and interests. I have invited them to apply techniques of detective stories to non-traditional subjects, to start narratives from found images, to work with lists and catalogues, to imply presence through descriptions of empty rooms or spaces. Keep it live, keep it sharp, keep it going."



DID YOU KNOW?

Surrey has played host to a range of visiting poets since the sixties, from Seamus Heaney to Ted Hughes.

Improving children's cancer care

Your University asks award-winning nurse Professor Faith Gibson about her joint role as Professor of Child Health and Cancer Care at the University of Surrey and Director for Research at Great Ormond Street Hospital for Children (GOSH) NHS Foundation Trust.

How did you come to be in your current roles?

I started training as a general nurse in 1978, later specialising in cancer care and then children's nursing. Having been at GOSH in a number of different clinical, educational and research roles since 1986, I feel so lucky to be in this post; the future is about closer collaborations between the places nurses are educated, and the places in which these nurses then work. The gap between education and practice for me no longer exists, now we just need to work on the gap between research and practice. My position at Surrey enables me to do research, mentor and supervise, as well as build research capacity across child health topics. In a similar vein, at GOSH I advocate the idea that we all contribute to a research agenda that improves care and patient outcome.

What inspires your work in young people's cancer care?

Surviving cancer is now very real for many children; treatments continue to advance, but we need the associated nursing and supportive care in order to continue improving their chances, or indeed ensure they survive with minimal effects from their time in hospital.

What would you say has been your greatest achievement?

I was awarded a fellowship by the Royal College of Nursing in 2007 and more recently in 2018, a Lifetime Achievement Award from the International Society of Paediatric Oncology. But my greatest achievement is probably being awarded a PhD, it certainly was for my mam.

How important is it to engage the next generation of nurses, doctors and researchers in your field?

We know that early engagement with researchers, such as myself, is essential to influence and inspire students about the importance of research in their nursing practice. Research drives advancements in treatments, and so that must be matched with advancements in nursing and supportive care.

What advice would you give someone who's interested in studying or working in children's cancer care?

Just do it – it is the most rewarding of careers. Seek a mentor early on, grasp opportunities for work experience, and get involved wherever you can.



Professor Faith Gibson

Talk to us

We always welcome suggestions for new features and feedback on *Your University*. To share your thoughts, or to find out more, contact: publicengagement@surrey.ac.uk

Schools and colleges

Summer science for sixth formers

This summer will see the University continue to inspire the next generation of scientists, partnering with local education charity SATRO to provide research placements for local sixth form students.

The four-week placements give students the chance to work in a research environment with world-leading academics. In October, sixth former Bo-Yan Chung from Purley won the SATRO STEMX Annual Award for her work with the University's Advanced Technology Institute, helping to create

electronic components using everyday organic materials such as egg white, and inkjet printing technology.

Bo-Yan's supervisor, Dr Radu Sporea, said: "Through this project we hoped to prove that a future of low-cost electronics can be realised by enterprising engineers. The enthusiasm for science is always there in young people, and in these placements we seek to enable students to express their curiosity and ingenuity, with very rewarding results."

If you would like to apply for a 2019 placement, visit: satro.org.uk



Placement students collect their certificates, alongside staff from SATRO and Dr Jim Glover OBE, the High Sheriff of Surrey



Above: the cast of *Shrek*. Credit: Robert Workman
Left: participants in the *Shrek* singing workshop
Credit: Steve Porter

Shrek helps local group believe in themselves

On 28 March, Guildford School of Acting (GSA) hosted a *Shrek* singing workshop for more than 180 children and adults with special educational needs and disabilities.

A collaborative event between GSA and Surrey Arts, the workshop saw attendees work with cast members and *Shrek* Musical Director Michael Cotton to learn various musical numbers from the show, including 'I'm a Believer', before being treated to a performance of *Shrek the Musical* by GSA final-year musical theatre students at the Yvonne Arnaud Theatre.

Julian Woolford, GSA's Head of Musical Theatre, explained: "We're delighted to collaborate with Surrey Arts to enable this group to work with final-year GSA musical theatre students.

Shrek is a marvellous vehicle for this kind of workshop as the story and characters are widely recognised and its message of inclusivity is a perfect fit for this kind of collaboration."

Alison Wrigley from Surrey Arts added: "The aim of the day was to develop the group's singing and related skills, and further raise their self-esteem and confidence.

"Through bringing together a wide age range, we hope young participants see singing as a skill for life, and a progression route from school to adulthood through community choirs, as well as the benefits of singing in a group – which helps tackle social isolation and give a sense of belonging."

Heroic healthy eating

In January, Year 5 pupils from Guildford Grove Primary School attended a Healthy Heroes workshop at the University to learn about nutrition and healthy eating.

During the workshop, pupils were taught about the *Eatwell Guide* and designed their own 'perfect plates' using different food groups. They also explored the University campus to find out more about university life and the similarities and differences between school and university.

A particular highlight of the day included a practical lab session investigating lactose intolerance by testing the sugar content of different types of milk. Commenting on their experience, one pupil wrote: "I love science and now want to be a scientist!"

The day was supported by Surrey students, as well as Year 7 and 8 pupils from Kings College. Emily Ridgley, Widening Participation and Outreach Officer, said: "It was fantastic having the Kings College students involved in the event. They really stepped up and took on the role of student ambassadors, answering any questions or worries the Year 5 pupils had about secondary school. It was great to see the students from Kings gaining in confidence over the course of the day."

Guildford School of Acting brightens pre-schoolers' horizons

Children from Bright Horizons Nursery and Pre-school visited the University's Guildford School of Acting (GSA) for an 'acting school' workshop.

Run by GSA Marketing Coordinator Madeleine Gibb, the workshop featured drama-related games designed to encourage the use of improvisation, mime, voice and storytelling skills to develop communication and awareness. Alison Avis, GSA's Head of Enterprise, also led a class in animal dance and movement.

Bright Horizons manager Leah Dyer said: "The children from our pre-school class loved visiting GSA. It is so important for the children to learn about expressing themselves through role play and expressive arts."



Children from Bright Horizons take part in the GSA acting workshop

Supporting Bellfields Community Centre

The Higher Education Outreach Network (HEON) is working to support the Community Youth Workers Programme at Bellfields Community Centre in north Guildford.

The scheme runs varied and engaging activities in a range of subject areas through monthly visits, aiming to encourage the young participants to consider their futures and explore the higher education and career options available to them.

In the last six months, staff from the University of Surrey and the University for the Creative Arts have arranged a variety of activities, from building working robots that are capable of drawing, to extracting DNA from strawberries.

HEON is a partnership working across Surrey and north-east Hampshire which, through collaboration with partners such as the University of Surrey, aims to increase the progression rates of students who are currently underrepresented in higher education.

Working with the students in Bellfields is an important aspect of HEON's growing work with communities across Surrey.

Business and learning

Bursaries for better futures

The University's Professional Training placement programme is one of the largest in the world, with more than 2,300 partners across Guildford, the rest of the UK and around the world.

Going on placement gives students vital experience of the workplace but, for some, financial difficulties mean they can't take part in the scheme.

That's why, in 2018, the Forever Surrey Fund gave bursaries to 25 students from disadvantaged



Kayleigh Cheong

backgrounds, allowing them to take up a business placement. The Forever Surrey Fund provides crucial support across the University, with thousands of alumni and friends of the University donating to the Fund every year.

One student, Kayleigh Cheong, was struggling to make ends meet. A close family bereavement meant her search for a paid Professional Training placement was put on hold.

A grant from the Forever Surrey Fund covered her living costs and enabled her to focus on finding a placement that would boost her employability. She is now successfully working for Surrey cancer clinical trial specialists, Theradex Oncology.

For more information visit: surrey.ac.uk/alumni/giving

€5 million to help boost businesses through Blockchain

The University of Surrey has kicked off a new collaborative project that will use Blockchain technologies to support start-ups and small-to-medium-sized-enterprises – and it's been awarded €5 million of funding by the European Union.

The Blockstart project unites the University with SETSquared Surrey, based in Surrey Research Park, and other groups across Europe, creating a partnership with the goal of harnessing the power of Blockchain technology to boost small business innovation. Blockchain is a continually-growing database that functions across several computers at once, with new sets of data (blocks) being constantly added. Focusing on the areas of health, logistics and agrifood, this project will use Blockchain to help ensure that the work of small businesses remains secure and efficient – from protecting their data, to tracking and invoicing goods.

Many smaller businesses find it difficult to adopt new technologies because the scale of their business is often not large enough. The Blockstart project is designed to change this, with its partners working together to identify and tackle the greatest challenges faced by small and medium enterprises. This system will then provide businesses with support, networking opportunities and an environment for testing.

SETSquared, an enterprise partnership between the

Universities of Surrey, Bath, Bristol, Exeter and Southampton, will offer development and coaching services to help businesses plan effectively for their ever-changing markets. Blockstart will also use the University of Surrey's world-leading Blockchain testbed to help advise companies on available technologies and opportunities for research and development.

Caroline Fleming, Head of Incubation at SETSquared Surrey, said: "This project is a great opportunity for small businesses to test and integrate state-of-the-art technologies in their current and future business models. SETSquared will be there to support small businesses in any way we can."

For more information visit: setsquared.co.uk



Credit: Getty Images

Launching Surrey businesses into space

In March, Surrey Space Centre hosted a networking event to help propel more small businesses into the sector, thanks to the new Space Research and Innovation Network for Technology (SPRINT) scheme.

Funded by Research England, SPRINT aims to encourage UK-based space and space-related enterprises to collaborate on funded projects with one or more of the scheme's five university partners – Surrey, Leicester, Southampton, Edinburgh and the Open University.

Leading experts met with local businesses, academics and organisations with a view to forming these collaborative partnerships, which could in turn create innovative new products and services to transform their commercial future. Space technologies and satellite imagery and data are increasingly

being used in a wide range of applications, from construction to disaster relief.

Professor Guglielmo Aglietti, Director of the Surrey Space Centre, said: "We are looking to build on the long and storied history – plus the recent, exciting developments – of the south-east in the space sector. This region has proved itself to be the epicentre of innovation and ideas; SPRINT aims to foster and nurture this spirit in as many small local businesses as possible."

UK companies can apply for up to £150,000 of funding to start collaborative projects with relevant academic experts such as the SPRINT partners.

To find out more, visit: sprintnetwork.space

Surrey wins employability award

The University of Surrey's Employability and Careers Centre has won the National Undergraduate Employability (NUE) Award 2019 for Best University Placement Service.

Last year more than 1,000 Surrey students completed Professional Training placements with employers across the world.

The judges described Surrey as "demonstrating a belief in employability", with the panel particularly impressed by our peer-to-peer coaching scheme, which sees current placement students mentoring undergraduates looking for placements.

Chief Student Officer, Lucy Evans, said: "The NUE Award is a reflection



Representatives from the Employability and Careers Centre with their NUE Award 2019

of the excellent support offered by our Professional Training admin team and placement tutors, and celebrates the achievements of students completing a placement as part of their studies. Surrey has an outstanding graduate employability record, with 93 per cent of our graduates in employment or further education after six months."

Before the crowd, there was a gaggle...

This year, students from Surrey Business School (SBS) ran crowdfunding campaigns which raised more than £7,500 for a range of projects, from Wildlife Aid Foundation and Children in Action, to the University's Theatre Society.

Their success lies with the gaggle – the initial digital crowd that makes crowdfunding campaigns fly. Gaggle Connect is a crowdspeaking website where student teams set up project pages to build support and evolve their ideas based on supporter feedback.

In turn, support is generated by users signing in with email addresses instead of pledging money. This means that once the projects migrate to a crowdfunding platform, they bring their gaggle with them for additional support.

Following the students' successful use of Gaggle Connect, representatives from crowdfunder.co.uk and SBS are in discussions with Guildford Borough Council about how the site could be used by local communities.

Find out more at: gaggleconnect.com

Students in Guildford

Societies in society: Surrey students volunteer with local school pupils

Students from across the University community have been giving up their time to work with school pupils from Kings College, Guildford.

From taking physical education lessons to hosting musical taster sessions, representatives from Surrey's societies and sports clubs have been volunteering as part of a scheme with the Students' Union. As well as volunteers from student groups, individual students have also been providing tutoring and helping at homework club.

By bringing university and school students together, Kings College pupils can discover more about what it's like to study at university, while University of Surrey students are able to develop their communication skills and help support their local community.

In one project, the Theatre Society worked together with the school's Rock Challenge team to create

a set for their Jumanji-themed dance performance. The Theatre Society said: "Working with the local community is something we're passionate about, especially when it provides a chance to learn about an area they might not have had experience in before. Set painting was perfect for this! It was a learning and bonding experience between the Society and the pupils."

“ I'm now able to contribute as not only a university student, but also a member of the community. ”
Luke McCabe,
BSc Computer Science student



Students' Union President Alex Harden and Vice President Activity Alexa Hughes accompany Steve the Stag during RAG week. Credit: Rob Shambles

Students raise thousands for local charities

Surrey Students' Union ran a refreshed programme of activity for RAG Week, dedicated to fundraising for two local charities.

This year, the Students' Union has chosen two local charities to benefit from its fundraising efforts: Oakleaf Enterprise, Surrey's only mental health charity working as a social enterprise to provide vocational training for those suffering from mental health issues, and Shooting Star Chase, a leading children's hospice charity caring for babies, children and young people with life-limiting conditions.

Raising and Giving (RAG) Week, which took place in March, kick-started with a sponsored 'jailbreak' which saw students taking on the challenge of travelling as far away from the University as possible – without spending a single penny.

University and Union staff were also invited to wear the University's colours of blue and gold on the Tuesday of RAG Week, in a joint effort to fundraise and boost team spirit for student societies and sports teams during their annual varsity tournament.

The Union ran many more fundraising sessions throughout the week, and both charities hosted pop-up stalls on campus, raising awareness for their work and giving students and staff the opportunity to donate personally.

This academic year alone, the Students' Union has raised a combined total of over £40,000 for charity.

Students help inspire futures

The Your Future programme, run in collaboration with Surrey County Council, supports local refugee and asylum-seeking young people.

This 12-week programme introduces the secondary school and college students to England's education system, including the opportunities available after leaving school and the benefits of higher education.

Undergraduate students from the University provide support for the programme, helping participants to gain confidence through meeting others and developing their language skills. The volunteer students are also from refugee or asylum seeking backgrounds or speak the same language.

Of their time supporting the programme, one Surrey student said:

"It's really exciting and moving to be given the opportunity to make a positive impact on these young people. I really love the enthusiasm and positivity of our group. Considering what some of them might have had to face (and might still be facing) in order to be here, at the university I call home, makes the experience incredibly humbling and rewarding."

'Stay Together, Stay Safe' in Guildford

The University's Students' Union, along with the Public Engagement team, Guildford Borough Council, Safer Guildford Partnership and Experience Guildford, have been working to launch a personal safety campaign for students and residents.

Posters will be displayed on large wheelee bins in the centre of town, as well as in central bars and pubs, to encourage people to think carefully about how they get home and stay safe around town.

The campaign's main message is: 'Don't leave your friends to get home alone – travel in groups or pairs to ensure you all get back safely'.

The Students' Union is also producing an online guide for students called *Safer at Surrey*,

as well as offering additional support for more vulnerable students in the Student Support Zone. A dedicated confidential student telephone service, Nightline, is also available.

Gemma Paine, Students' Union Vice President Community said: "This year the Students' Union has focused on creating a safer Surrey through collaborations with local partners. We cannot wait to see our joint campaign come to life and create a safer home for Surrey students and residents."



1. Credit: Getty Images
2. Free Fest
3. GSA Saturday School student. Credit: Mark Dean
4. Bad Girls: The Musical. Credit: Steve Porter
5. Pint of Science. Credit: Grant Pritchard

What's on

GSA Saturday School 27 April – 6 July GSA, Stag Hill

Guildford School of Acting's Saturday School provides world-class training to students aged five to 17+. From ballet and street dance, to acting and musical theatre, there are a huge range of classes available.

All sessions take place between 9:30am and 5:30pm every Saturday during a 10-week term.

gsauk.org

Guildford International Music Festival 10 – 25 May PATS Studio 1, Stag Hill

Guildford International Music Festival will bring together a diverse range of exciting musical performances from both students and guest performers. The event will showcase impressive classical recitals, specialist guitar and cello days, experimental electronica and much more. In this celebration of music, everyone is welcome.

surrey.ac.uk/events

Free Fest 18 – 19 May Stag Hill

Hosted by the Students' Union, Free Fest is a fun-filled two-day festival held near the beautiful lake on the University's campus. The family-friendly event is free to attend and is set to include lively music performances, movies at our open-air cinema, a children's inflatable play area, incredible food and more.

facebook.com/surreyunion

Pint of Science 2019 20 – 22 May Various venues

Are you curious about science? Pint of Science festival returns to bring you some of Surrey's most brilliant researchers all from the comfort of your local Guildford pub. Sit back and enjoy a pint while you listen to and engage with academics at the forefront of their fields, discussing captivating science topics.

pintofscience.co.uk/events/guildford

The Crucible 30 May – 1 June PATS Studio Theatre

In early summer, Guildford School of Acting brings us a thrilling new production of classic drama, *The Crucible*. Written by Arthur Miller, one of America's greatest playwrights, the story confronts the evils of persecution and the terrifying power of false accusations in a town paralysed by fear and religious extremism.

gsauk.org/events

Conductors' Concert 1 June Holy Trinity Church, Guildford

Student conductors from the University of Surrey Symphony Orchestra are set to take the baton for an evening of stunning musical performances. With a wide repertoire of compositions, from Mendelssohn's glowing *Hebrides Overture* to Beethoven's gripping *Symphony No.5*, the event promises to be an exhilarating feast for your ears.

surrey.ac.uk/events

Bad Girls: The Musical 6 – 8 June Bellairs Theatre, Ivy Arts Centre

This powerful, uplifting and raucously entertaining British musical, based on the award-winning and hugely popular ITV television drama, is full of big songs and big characters! Set in a women's prison, *Bad Girls* introduces us to a spirited bunch each with stories of lives left behind and dreams of a better future.

gsauk.org/events

Bright Club Guildford 19 July BBC Surrey

Once again, Bright Club Guildford is performing at Guildford Fringe Festival. Combining comedy, science and music, comedians and musicians share the stage with the University's best and brightest to spin their specialisms into comedy gold. Dive headfirst into the scene and enjoy a lot of laughs along the way.

guildfordfringefestival.com

GSA Summer Conservatoire 29 July – 9 August GSA, Stag Hill

Guildford School of Acting is launching an inspiring new Summer Conservatoire for young people aged 14+ who are passionate about pursuing a career in the arts. Our acting and musical theatre courses provide a fun and challenging training experience which aims to bring out the best in everyone taking part.

gsauk.org

Adams Sweeting lecture – Science as Revolution 16 October Stag Hill

The Adams Sweeting lecture series sees scientists present fascinating talks on pioneering developments in their area of expertise.

In the second lecture of 2019, geneticist and Nobel Prize winner Sir Paul Nurse speaks about how science may be the most long-lasting revolutionary activity known to humankind.

surrey.ac.uk/asevents

Find out more

Interested in hearing more about events at the University? Sign up to receive our monthly 'What's on' email guide by sending your name and email address – with the subject line 'What's on newsletter' – to: events@surrey.ac.uk

Getting active at Surrey Sports Park

While Surrey Sports Park is well-used by the many students living in Guildford, the £36m facility is also fully open to the public – and there's something for everyone.

You can get active at Surrey Sports Park by either becoming a member, or joining activities on a pay-as-you-go basis. Home to the only indoor Olympic-sized pool in Surrey, the Surrey Summit climbing wall, indoor and outdoor racket courts and award-winning grass pitches, the facility has plenty for members of the public to get involved with throughout the year. The Sports Park also runs courses and classes, covering a vast range of fitness

and wellbeing activities – from yoga to indoor cycling.

If you'd prefer to watch live sport, the Sports Park offers family-friendly entertainment, with professional sports teams including Surrey Storm (netball) and Surrey Scorchers (basketball) frequently competing in the facility's 1,000-seat arena. Beyond opportunities for exercise, the Bench Sports Bar and large Starbucks coffee lounge have excellent views of the surrounding area.

Local kids bounce into the weekend

The Forever Surrey Fund has bought a high-spec trampoline to help support local clubs at Surrey Sports Park.

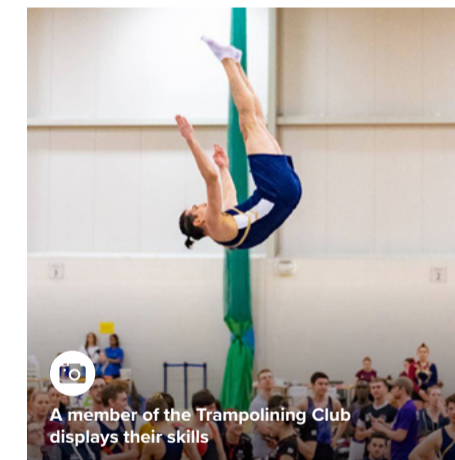
The international-standard trampoline will be used by the Surrey Trampolining Club, whose student members help run the Saturday Sports Club, providing sessions for local children with special educational needs and their families.

Every year, thousands of alumni and friends of the University donate to the Forever Surrey Fund, and in 2018 the Fund awarded almost £250,000 to help support work placement bursaries and students in financial hardship.

Eight Surrey clubs and societies were also given funding, allowing them to offer our students more transformational experiences. This included the University's rowing club, which last year produced a top 10 finish in the British

Universities and Colleges Sport Regatta – a record achievement for Surrey.

For more information about the Saturday Sports Club, visit: surreysportspark.co.uk/juniors/saturday-sports-club



A member of the Trampolining Club displays their skills

Sports Park launches football 'Satellite Club'

Surrey Sports Park has launched a new football 'Satellite Club', as part of its ongoing commitment to provide students with a platform to help the community.

In partnership with Active Surrey, Surrey Football Association, Kings College School and local grassroots football club, Guildford Saints, the weekly recreational session for 14 to 19-year-olds is led by Guildford Saints football coaches, and supported by student coaches from the University.

The club has been made possible by way of a Sport England grant through Active Surrey, to help achieve Sport England's aim of bridging the gap between school, college and community sport,

and to provide new opportunities for young people to get involved. It is hoped that the sessions will have the added benefit of working to combat social exclusion in the area, using this inclusive football club as a way of raising the aspirations of young people who take part.

The Satellite Club takes place at Surrey Sports Park every Friday from 6:30pm – 7:30pm, at a cost of £1 per person. (Bursaries are available.)

To find out more, visit: surreysportspark.co.uk

MEMBERSHIP OFFER

Start your health and fitness journey at Surrey Sports Park with 12 months for the price of 10!
Email: memberships@surreysportspark.co.uk



A view of Surrey Sports Park and playing fields

Inspiring member: Ella boosts her physical and mental health through 'Choose to Lose'

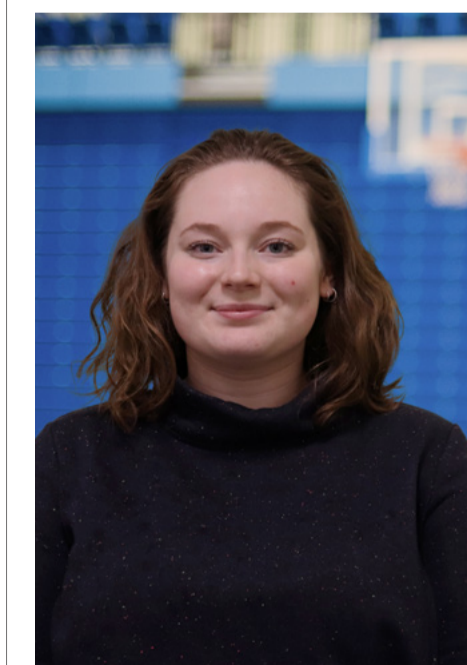
Your University caught up with Surrey student Ella Finley to find out how joining the 'Choose to Lose' weight loss course at Surrey Sports Park has made a significant difference in her life – after just eight weeks.

"Choose to Lose has possibly been the best thing I have invested in for my health and wellbeing. I call it an investment as not only has the course encouraged me to begin exercising regularly and to eat well, it's also taught me how to look after my body during exercise and to always keep pushing myself.

"Everyone I have met through this process has been so amazing and encouraging. I cannot thank them enough for helping me choose to lose a whopping 8.4kg (so far!) Although the results on the scales

have been spectacular, another factor I have noticed is the drastic improvement in my mental health. The buzz I have been getting after the hour-long workouts has been so good that I'm finally starting to kick my habit of emotional eating. For the first time in my life, I am excited to keep exercising and to see where this journey will take me."

Surrey Sports Park offers a variety of courses and classes, from yoga and running, to weight loss and aqua zumba. Discover more at: surreysportspark.co.uk



Above: inspiring member, Ella Finley
Right: runners at Surrey Sports Park





Left: Georgina Agnies, Sports Participation Manager
Above: a young participant at a netball junior summer camp

Taking sports participation up a gear

Your University caught up with Georgina Agnies, Sports Participation Manager at Surrey Sports Park. We asked her to tell us about what inspires her to work in sports development.

Can you tell us a bit about your background and role at Surrey Sports Park?

Since completing my degree in sports management, I've been working in the sport sector gaining experience within higher education, community and national governing body settings. At Surrey Sports Park, my role encompasses the management of a portfolio of sports and a team of officers and coaches working towards a sports development strategy. Along with my team, I lead on the design and delivery of a diverse, exciting and innovative programme of sports opportunities which support the growth of sport and physical activity for all.

Why is sports participation and outreach so important to Surrey Sports Park?

It's all about the added benefits being active and taking part in sport can have on people's lives. Whether it's an individual's goal to be healthier, or simply to gain the mental health rewards of being physically active, Surrey Sports Park wants to be a part of it. We have an amazing facility and want it to benefit as many people as possible.

You work closely with a number of local community groups, schools and colleges – why is this work so significant?

We have lots of fantastic relationships within the local community and continue to grow these. Working with so many different groups not only allows members and students to benefit from great programmes and facilities, but it also helps

us to create a footprint in the local community which I believe can open people's eyes to what the University has on offer and raise the aspirations of young people.

What three things do you think our readers might be surprised to learn about the Sports Park's outreach and community work?

1. We have two professional teams based at Surrey Sports Park – Surrey Storm (netball) and Surrey Scorchers (basketball), both of which are involved in providing local sport opportunities for young people
2. In 2017-18 we worked with more than 16,000 school children on a number of different projects including community outreach work
3. We have a team dedicated to delivering junior sport and participation opportunities in the local community and at the Sports Park.

What's on the horizon for the next six months?

Well, the next six months will involve more planning for next year – more projects, events and opportunities for people to take part in. This includes our summer open day on Saturday 27 July, a day when families can visit Surrey Sports Park to sample the many activities and facilities on offer. Sessions will be suitable for kids of all ages, as well as adults, and will include exercise classes, racket sports, basketball, netball, pool activities and much more!

To find out more, visit: surreysportspark.co.uk



DID YOU KNOW?

Surrey Sports Park has its own in-house injury and therapy clinic – and it's open to everyone.

Whether you have an ongoing niggle or need help with post-surgery rehabilitation, you can get a free 10-minute consultation by emailing: thetreatmentroom@surrey.ac.uk

Local students learn business from sport

A local college visited Surrey Sports Park to explore how sports skills can be applied in the workplace.

'Business in Sport', a collaborative project between the Higher Education Outreach Network, Surrey Sports Park and Fieri Leadership, used team-based sports to explore professional skills such as problem solving, leadership, and persuasion.

Year 10 students from Christ's College Guildford took part in a variety of activities, including overcoming fear of failure by breaking wood with their bare hands, playing basketball with the Surrey Scorchers and building their confidence on the climbing wall.

One teacher said: "It was great to see how the games linked to skills that the students need to develop, whatever they decide to do in the future."



Year 10 students take part in an overcoming fear of failure activity at the 'Business in Sport' workshop

What's on at Surrey Sports Park

To find out more and book tickets, visit: surreysportspark.co.uk

Sports Pro Series May – September Surrey Sports Park

Are you an avid sports fan? Surrey Sports Park is running a series of exciting sports personality Q&A events throughout the summer. With sporting legends past and present from the worlds of cricket, tennis, netball, basketball and rugby sharing their advice and experiences, the Sports Pro Series is sure to inspire.

Junior summer camps 25 July – 30 August Surrey Sports Park

Whether it's fun family activities or full-day holiday camps, Surrey Sports Park has plenty to keep the kids active and entertained this summer. From netball and basketball, to tennis and climbing, our summer camps are a great way for juniors aged three to 16 years to learn new skills and banish boredom.

Summer open day 27 July Surrey Sports Park

The team at Surrey Sports Park are inviting families to come along to an open day at the venue and sample the many fun activities and facilities on offer. Sessions are suitable for kids and adults of all ages, and will include exercise classes, basketball, pool activities and more.